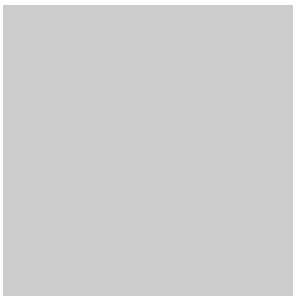
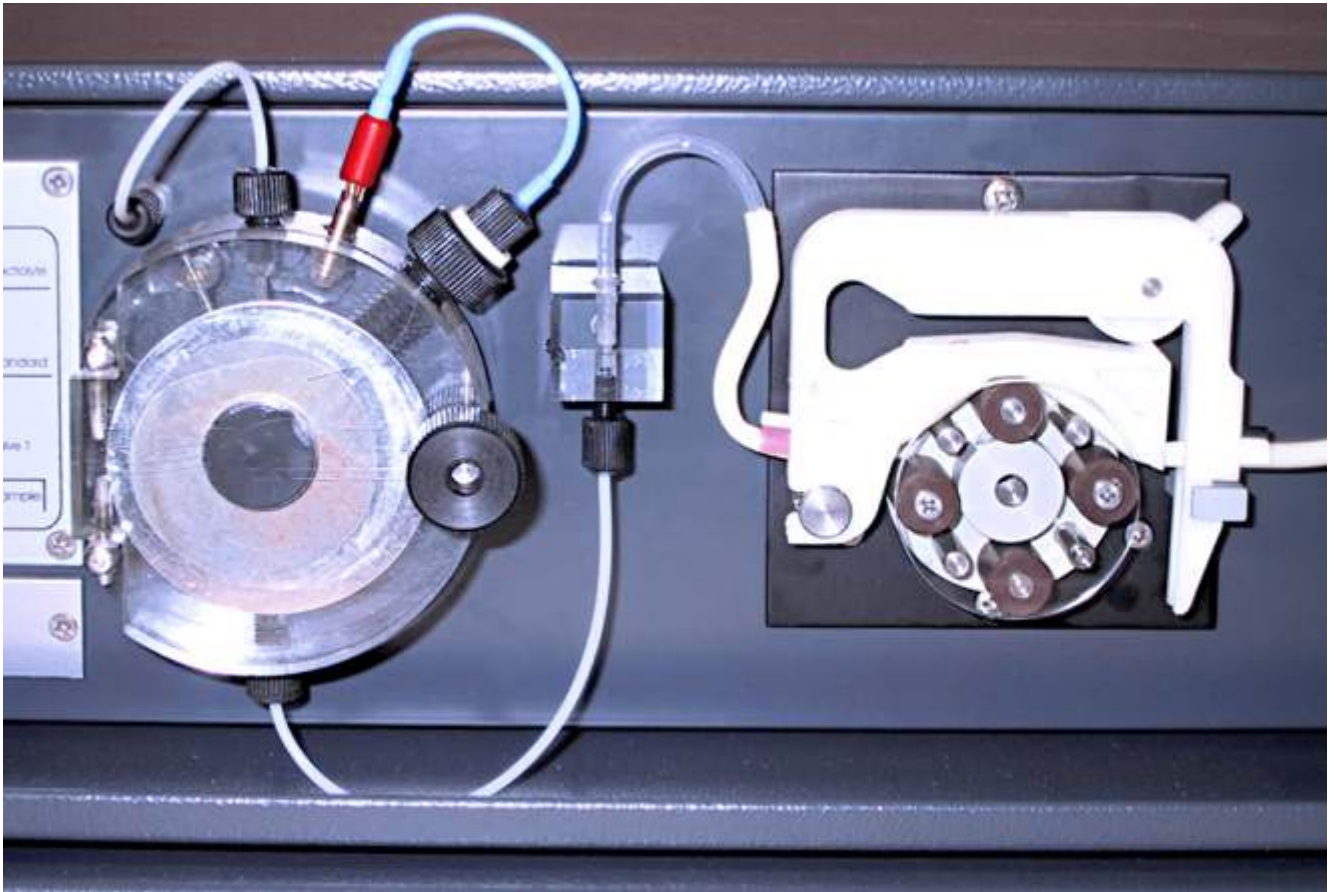


▶ Metal layer analyser EcaLayer



The coulometric technique is used for measuring the thickness of electroplated deposits on a wide variety of substrates such as steel, aluminium, copper, nickel, silver, alloys, some insulators. The coulometric method ensures accurate and precise results. The analyser is extremely

simple to use and therefore it is also suitable for routine measurements not needing any special qualification. Moreover, coulometry is the only method allowing the measurement of multi-layer coatings such as chrome, chrome oxide on tin, tin, tin-iron intermetals on steel, etc.

TECHNICAL DATA

▶ Potentiostat/galvanostat	12 V / 100 mA
▶ Cell	<ul style="list-style-type: none"> • EcaCell 20 cm² • EcaCell 0.6 cm²
▶ Flow system	Full computer control with peristaltic pumping
▶ Weight	7 kg
▶ Dimensions	500 x 450 x 140 mm
▶ Software	Galvanostatic chronopotentiometry
▶ Computer (option)	Any PC with Windows 98 and higher

OPTIONS - CONTROL PC

A suitably configured PC can be delivered on request.



ORDERING INFO

PRODUCT	PHOTO	CATALOG NUMBER
▶ EcaLayer 200		01060
▶ Control PC (specification on request)		01014
▶ Additional cell EcaCell 20 cm ²		01061
▶ Additional cell EcaCell 0.6 cm ²		01062